



Sackville Road, Hove, BN3 3WE  
**£220,000**



**GOLDIN  
LEMCKE**

**01273 777123**  
GOLDINLEMCKE.COM

SELLING HOMES  
IN BRIGHTON  
& HOVE  
SINCE 2002



# Sackville Road, Hove, BN3 3WE

**£220,000**

A bright one-bedroom flat forming part of the top floor of this substantial period building, situated in an extremely central and sought-after position, moments from Hove mainline railway line and the many amenities found close by on Blatchington Road and George Street.



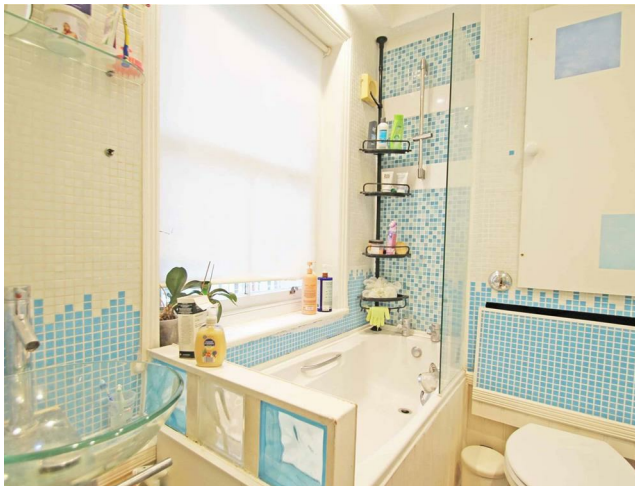




## Further Information

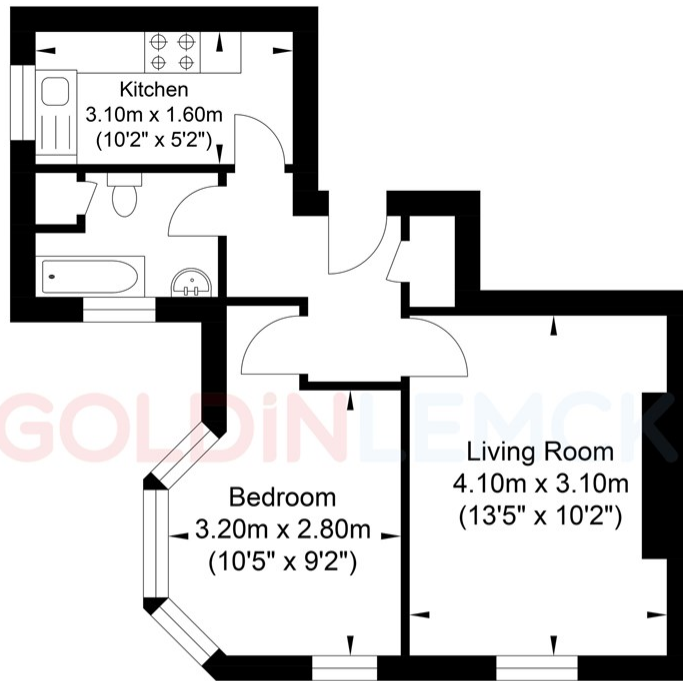
The accommodation comprises a spacious west-facing living room with far reaching distant views, a double aspect bedroom with bay window, fitted kitchen, and bathroom. The flat is offered for sale in good decoration order throughout, with the added advantage of no onward chain. Early viewing is highly recommended.

Sackville Road sits in a well-connected part of Hove, with plenty of shops, cafés, and bus routes close by. Hove Station is just a short walk away, making commuting straightforward, and the seafront is also within easy reach. It's a great spot for anyone who wants everyday convenience and easy access to everything Hove has to offer.



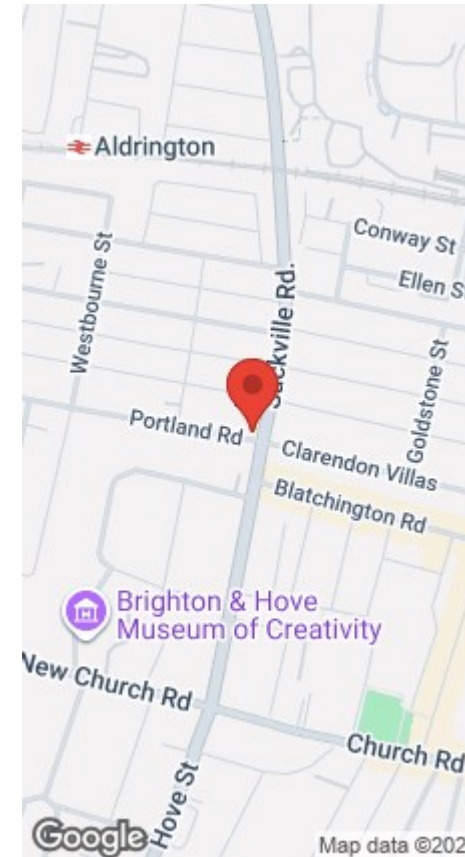
**GOLDINLEMCKE**

01273 777123  
GOLDINLEMCKE.COM



Ground Floor  
Approximate Floor Area  
382.76 sq ft  
(35.56 sq m)

Approximate Gross Internal Area = 35.56 sq m / 382.76 sq ft  
Illustration for identification purposed only, measurements are approximate, not to scale.  
Copyright GDImpact 2020



**GOLDIN  
LEMCKE**

**01273 777123**  
**GOLDINLEMCKE.COM**

## SELLING SOMETHING SIMILAR?

Get in touch for a free, no obligation valuation.  
Call 01273 777123 or email [property@goldinlemcke.com](mailto:property@goldinlemcke.com)

The above information has been provided by the vendor in good faith, but will need verification by the purchaser's solicitor. Any areas, measurements or distances referred to are given as a guide only and are not precise. Floor plans are not drawn to scale and are provided only to help illustrate the general layout of the property. The mention of any appliances and/or services in this description does not imply that they are in full and efficient working order and prospective purchasers should make their own investigations before finalising any agreement to purchase. It should not be assumed that any contents, furnishings or other items shown in photographs (which may have been taken with a wide angle lens) are included in the sale. Any reference to alterations to, or use of, any part of the property is not a statement that the necessary planning, building regulations, listed buildings or other consents have been obtained. We endeavour to make our details accurate and reliable, but they should not be relied on as statements or representations of fact and they do not constitute any part of an offer or contract. The seller does not give any warranty in relation to the property and we have no authority to do so on their behalf.

Energy Efficiency Rating		
	Current	Potential
Very energy efficient - lower running costs		
(92 plus) A		
(81-91) B		
(69-80) C		
(55-68) D		
(39-54) E	59	68
(21-38) F		
(1-20) G		
Not energy efficient - higher running costs		
England & Wales		EU Directive 2002/91/EC

SELLING HOMES  
IN BRIGHTON  
& HOVE  
SINCE 2002